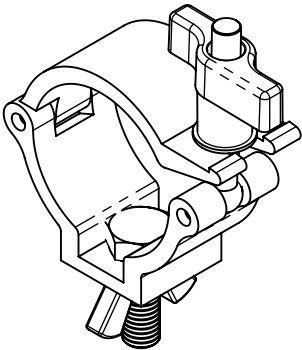
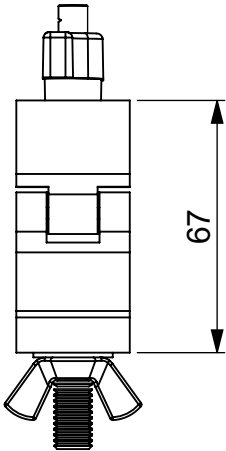
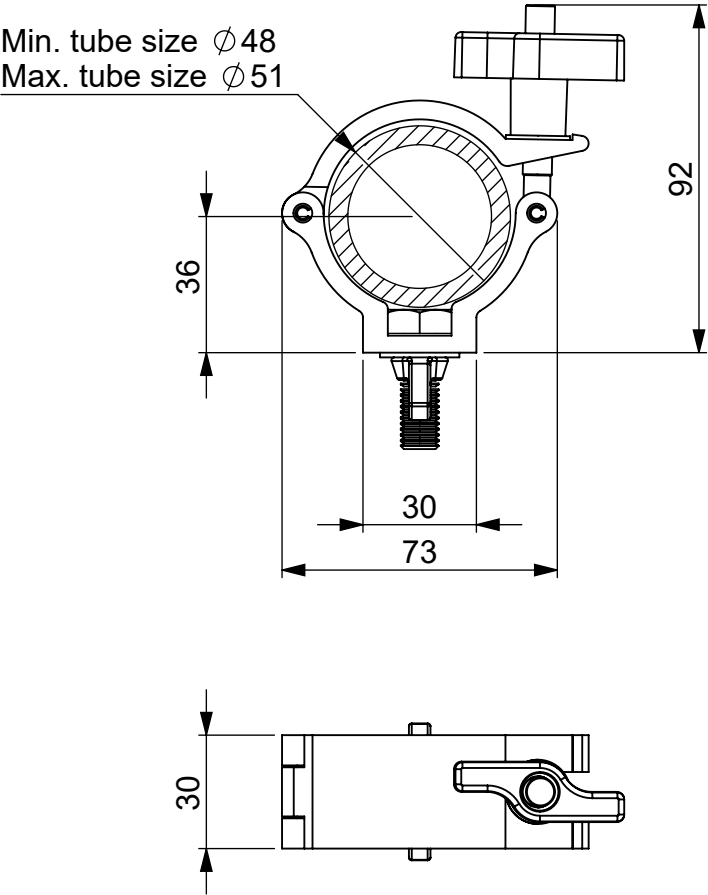




REVISION HISTORY			
DATE	REV.	DESCRIPTION	BY
22.08.2019	A	First release	LTousgaard



General Technical Specification apply to this item

© 2019 HARMAN Professional Denmark ApS PROPRIETARY AND CONFIDENTIAL PROPERTY OF HARMAN. DO NOT DISCLOSE, REPRODUCE, OR PUBLISH WITHOUT WRITTEN HARMAN APPROVAL.	Material	FIRST ANGLE PROJECTION						HARMAN Professional Denmark ApS Olof Palmes Allé 44 DK 8200 Aarhus N		
	Aluminium			TITLE (Model in view 91602018-A)						
	General linear tolerance				Super Lightweight Half Coupler					
	General angular tolerance	Surface treatment			NO. REV					
ROHS RESTRICTION OF HAZARDOUS SUBSTANCES ALL MATERIALS USED IN THIS PART MUST BE ROHS COMPLIANT. SUPPLIER SHALL PROVIDE A CERTIFICATE OF ROHS COMPLIANCE WITH THE FIRST ARTICLE.	General geometrical tolerance	Color		NO. REV						
	DIMENSIONS SHOWN ARE FOR REFERENCE AND INSPECTION ONLY. REFER TO CAD MODEL PROVIDED WITH THIS DRAWING FOR OVERALL DEFINITION OF PART GEOMETRY.	Project number		SIZE A4	SCALE 1:2	UNIT mm	DO NOT SCALE DRAWING	SHEET 1	OF 1	